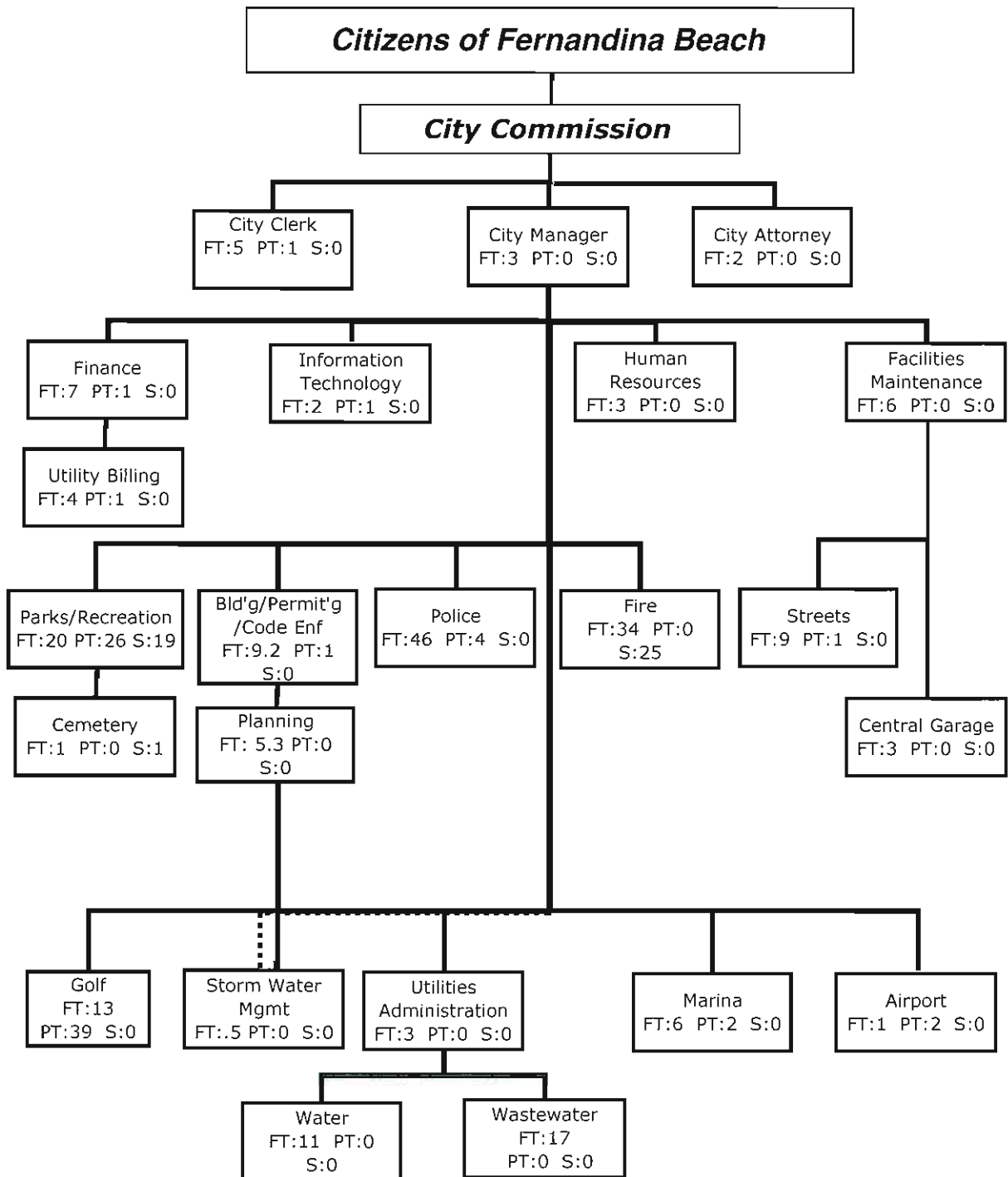


Statistical Analysis

Table of Contents-Statistical Analysis

Section	Description	Page #
Statistical Analysis	Statistical Analysis Table of Contents	Statistical II.1
	Citywide Organizational Chart	II.2
	Summary Statistics & General Information	II.3
	Assessed Valuation	II.4
	Property Tax Information	II.5
	Property Tax Rate Comparison	II.6
	Property Tax Rate History	II.7
	Chart of Comparison/ Property Taxes	II.8
	Homeowner Tax Bill	II.9
	Sewer and Refuse Rate Trends	II.10
	Population Graph	II.11
	Consumer Price Index	II.12
	Grants Awarded 10/1/05-- 9/30/06	II.13

**City of Fernandina Beach
Organization Chart**



Full-Time: 211

Part-Time: 79

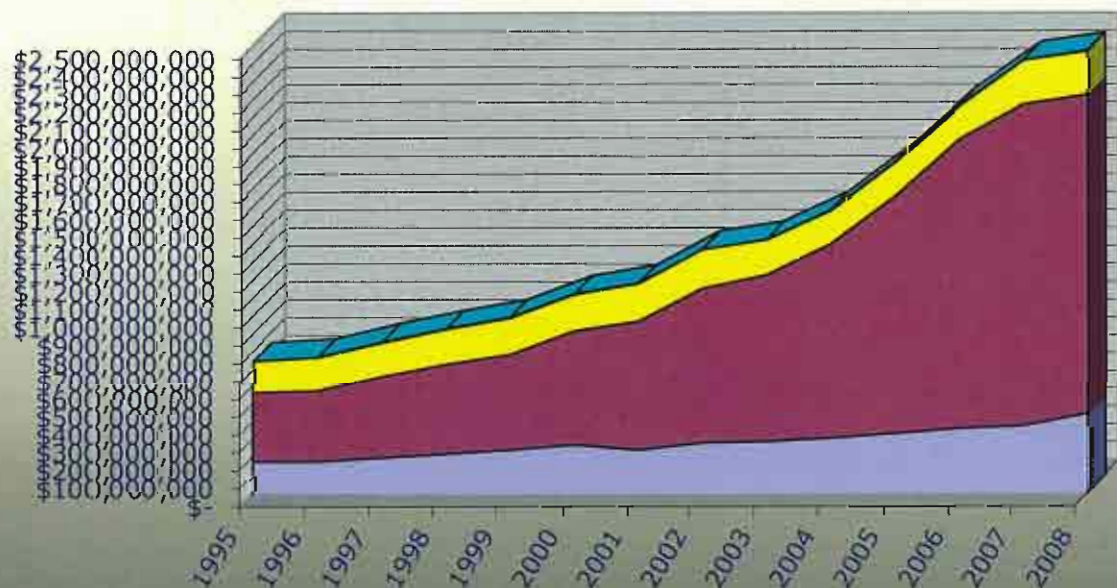
Seasonal: 45

<i>City of Fernandina Beach Summary Statistics & Other Information</i>	
Year of Incorporation	1825
Form of Government	Commission/Manager
City Population	11,830
Area of City in Square Miles	14
Miles of Coastline	8.5
Number of City Employees	
Full-Time	211
Part-Time	79
Temporary/Seasonal	45
Government Facilities and Services	
Miles of Streets	75.09
Miles of Storm Sewers	6.99
Number of Street Lights	1,196
Culture and Recreation	
Community Centers	3
Parks	16
Parks Acreage	418
Golf Course	1
Marina	1
Tennis Courts	4
Fire Protection	
ISO Fire Classification	5
Number of Stations	2
Number of Fire Personnel and Officers	34
Number of Calls for Service	5400
Number of Inspections Conducted	700
Police Protection	
Number of Stations	1
Number of Police Personnel and Officers	46
Number of Citations	2,870
Number of Calls for Service	32,062
Sewer System	
Miles of Sanitary Sewers	64.5 LM
Number of Treatment Plants	1
Daily Average Consumption in Gallons	1.837
Maximum Daily Capacity of Treatment Plant in Gallons	3.500 MGD
Water System	
Miles of Water Mains	144.31LM
Number of Active Accounts	8,357
Number of Treatment Plants	3
Daily Average Pumpage in Gallons	3.454 MGD
Maximum Daily Capacity of Treatment Plant in Gallons	18.2 MGD
Community Development Department	
Total Number of Inspections Completed	4,828
Total Number of Permits Issued	1,857
Cemeteries	1

**City of Fernandina Beach
Assessed Valuation**

Year	Tax Exempt	Real Property	Personal Property	Centrally Assessed	Total Assessed Valuation
1995	172,998,889	382,705,896	180,792,497	865,184	737,362,466
1996	174,717,101	391,294,745	189,923,198	865,184	756,800,228
1997	196,925,362	454,483,983	189,796,581	1,639,161	842,845,087
1998	218,438,475	498,789,301	198,032,311	1,539,134	916,799,221
1999	237,743,562	535,491,033	203,125,657	1,467,973	977,828,225
2000	267,709,486	637,270,715	204,171,017	1,307,667	1,110,458,885
2001	239,394,767	717,889,405	212,899,747	1,139,019	1,171,322,938
2002	276,789,322	865,575,555	216,187,292	1,190,196	1,359,742,365
2003	284,446,067	930,082,923	197,150,962	1,186,630	1,412,866,582
2004	301,966,794	1,084,261,098	188,866,346	2,081,443	1,577,175,681
2005	328,925,327	1,324,003,445	190,505,499	1,486,486	1,844,920,757
2006	355,164,445	1,614,338,881	188,252,367	3,022,391	2,160,778,084
2007	370,551,804	1,799,158,775	243,624,811	1,667,931	2,415,003,321
2008	437,824,431	1,784,626,178	243,055,518	1,545,241	2,467,051,368

Annual Assessed Valuation



Tax Exempt
 Real Property
 Personal Property
 Centrally Assessed

<p align="center"><i>City of Fernandina Beach Property Tax Information</i></p>					
Fiscal Year	Taxable Value	Millage Rate	Calculated Receipts	% Change Dollars	% Change Tax Rate
1988-1989	\$ 362,353,868	7.7950	\$ 2,691,983	1.55%	-5.16%
1989-1990	\$ 446,151,326	7.2000	\$ 3,060,525	13.69%	-7.63%
1990-1991	\$ 458,148,256	7.1840	\$ 3,159,525	3.23%	-0.22%
1991-1992	\$ 481,314,817	7.4500	\$ 3,459,266	9.49%	3.76%
1992-1993	\$ 518,015,749	6.9960	\$ 3,551,263	2.66%	-6.09%
1993-1994	\$ 530,397,603	6.8500	\$ 3,453,671	-2.75%	-2.09%
1994-1995	\$ 548,350,821	6.7130	\$ 3,542,455	2.57%	-2.00%
1995-1996	\$ 564,363,577	6.9477	\$ 3,743,219	5.67%	3.50%
1996-1997	\$ 589,590,448	6.9477	\$ 3,934,789	4.51%	0.00%
1997-1998	\$ 644,177,937	6.9477	\$ 4,300,560	9.29%	0.00%
1998-1999	\$ 698,360,746	6.6962	\$ 4,462,344	3.76%	-3.62%
1999-2000	\$ 740,084,663	6.6962	\$ 4,707,582	5.50%	0.00%
2000-2001	\$ 842,749,399	6.6210	\$ 5,300,852	12.60%	-1.12%
2001-2002	\$ 931,928,171	6.2185	\$ 5,505,435	3.86%	-6.08%
2002-2003	\$ 1,082,956,043	6.2185	\$ 6,397,644	16.21%	0.00%
2003-2004	\$ 1,128,420,515	6.0762	\$ 6,513,683	2.00%	-2.28%
2004-2005	\$ 1,275,208,887	6.0762	\$ 7,361,003	13.00%	0.00%
2005-2006	\$ 1,515,995,430	5.1825	\$ 7,463,814	1.40%	-14.71%
2006-2007	\$ 1,805,613,639	4.4106	\$ 7,565,648	1.36%	-14.89%
2007-2008	\$ 2,044,451,517	4.0678	\$ 7,978,900	5.46%	-7.77%
2008-2009	\$ 2,029,226,937	4.2209	\$ 8,213,322	2.94%	3.76%

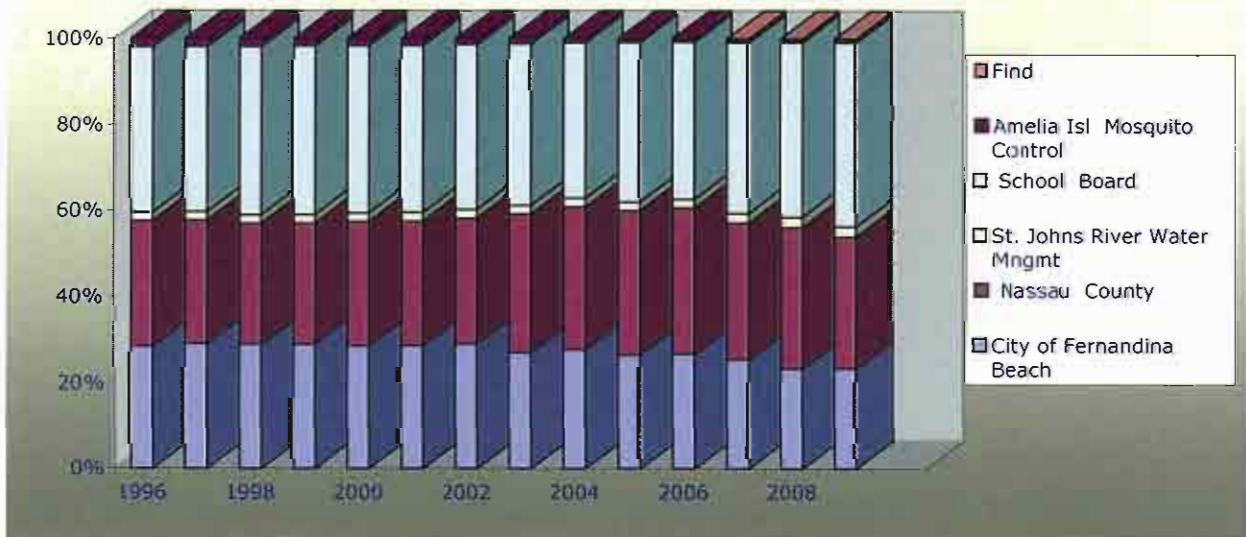
<p style="text-align: center;"><i>City of Fernandina Beach</i> <i>Property Tax Rate Comparison</i></p>		
<p style="text-align: center;">Property Tax Rates</p>		
Fiscal Year	Millage Rate	Percentage Increase (Decrease)
1992	7.4500	3.76%
1993	6.9960	-6.09%
1994	6.8500	-2.09%
1995	6.7130	-2.00%
1996	6.9477	3.50%
1997	6.9477	0%
1998	6.9477	0%
1999	6.6962	-3.62%
2000	6.6962	0%
2001	6.6210	-1.12%
2002	6.2185	-6.08%
2003	6.2185	0.00%
2004	6.0762	-2.28%
2005	6.0762	0.00%
2006	5.1825	-14.71%
2007	4.4106	-14.89%
2008	4.0678	-7.77%
2009	4.2209	3.76%



**City of Fernandina Beach
Property Tax Rate History
(Per \$1,000 of Assessed Taxable Value)**

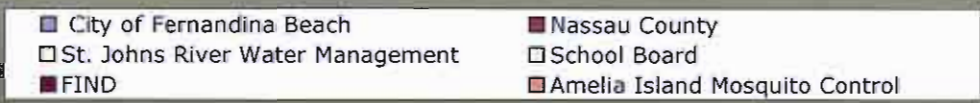
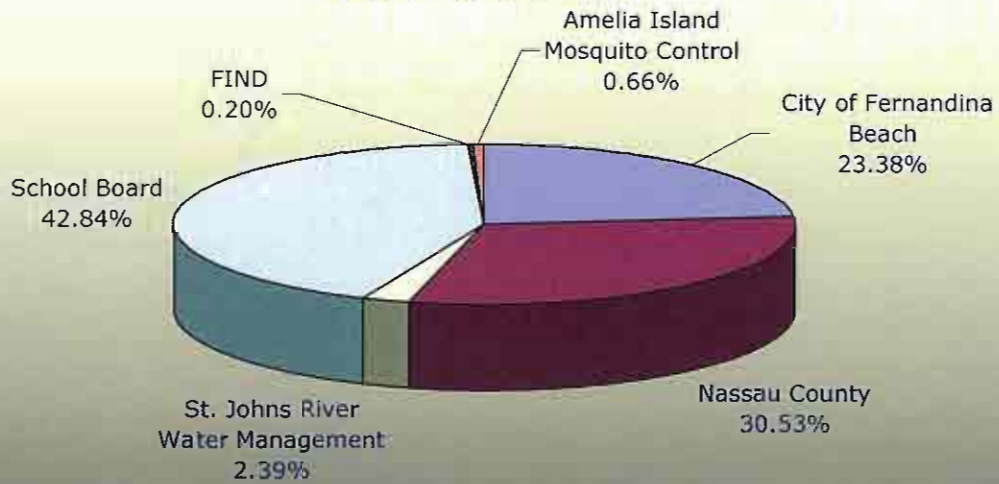
Year	City of Fernandina Beach	Nassau County	St. Johns River Water Mngmt	School Board	FIND	Amelia Isl Mosquito Control	Total
1996	6.9477	6.8321	0.4820	9.1750		0.4432	23.8800
1997	6.9477	6.7321	0.4820	9.4080		0.4341	24.0039
1998	6.9477	6.7321	0.4820	9.4080		0.4029	23.9727
1999	6.6962	6.7321	0.4820	9.1070		0.3750	23.3923
2000	6.6962	6.7321	0.4820	9.0810		0.3546	23.3459
2001	6.6210	6.6321	0.4720	8.7460		0.3047	22.7758
2002	6.2185	7.3821	0.4620	8.6390		0.2709	22.9725
2003	6.2185	7.3821	0.4620	8.1010		0.1900	22.3536
2004	6.0762	7.6821	0.4620	8.5380		0.1792	22.9375
2005	6.0762	7.6821	0.4620	8.3130		0.1660	22.6993
2006	5.1825	6.4321	0.4620	8.081	0.0385	0.1441	20.3402
2007	4.4106	6.1821	0.4620	7.681	0.0385	0.1225	18.8967
2008	4.0678	5.3115	0.4158	7.454	0.0345	0.1149	17.3985
2009	4.2209	5.5670	0.4158	7.625	0.0345	0.1190	17.9822

Millage History

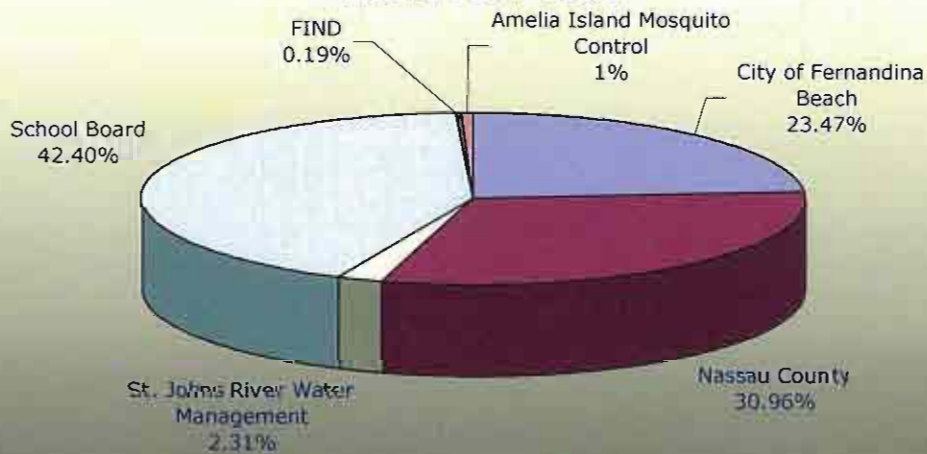


**City of Fernandina Beach
Property Tax Rate Comparison
Fiscal Years 2008 & 2009**

**Total Property Taxes
Fiscal Year 2008**



**Total Property Taxes
Fiscal Year 2009**



City of Fernandina Beach Homeowner Tax Bill* Based on 2008 (FY 2008-09) Tax Rate					
VALUE OF HOME		2009 TAX	2008 TAX	\$\$ Change	% Change
\$50,000	Operating	\$ 99.68	\$ 95.90	\$ 3.78	3.94%
	Debt	\$ 5.84	\$ 5.80	\$ 0.04	0.69%
	Total	\$ 105.52	\$101.70	\$ 3.82	3.76%
\$100,000	Operating	\$ 299.05	\$287.69	\$ 11.36	3.95%
	Debt	\$ 17.52	\$ 17.39	\$ 0.13	0.75%
	Total	\$ 316.57	\$305.08	\$ 11.49	3.77%
\$150,000	Operating	\$ 498.41	\$479.49	\$ 18.92	3.95%
	Debt	\$ 29.20	\$ 28.99	\$ 0.21	0.72%
	Total	\$ 527.61	\$508.48	\$ 19.13	3.76%

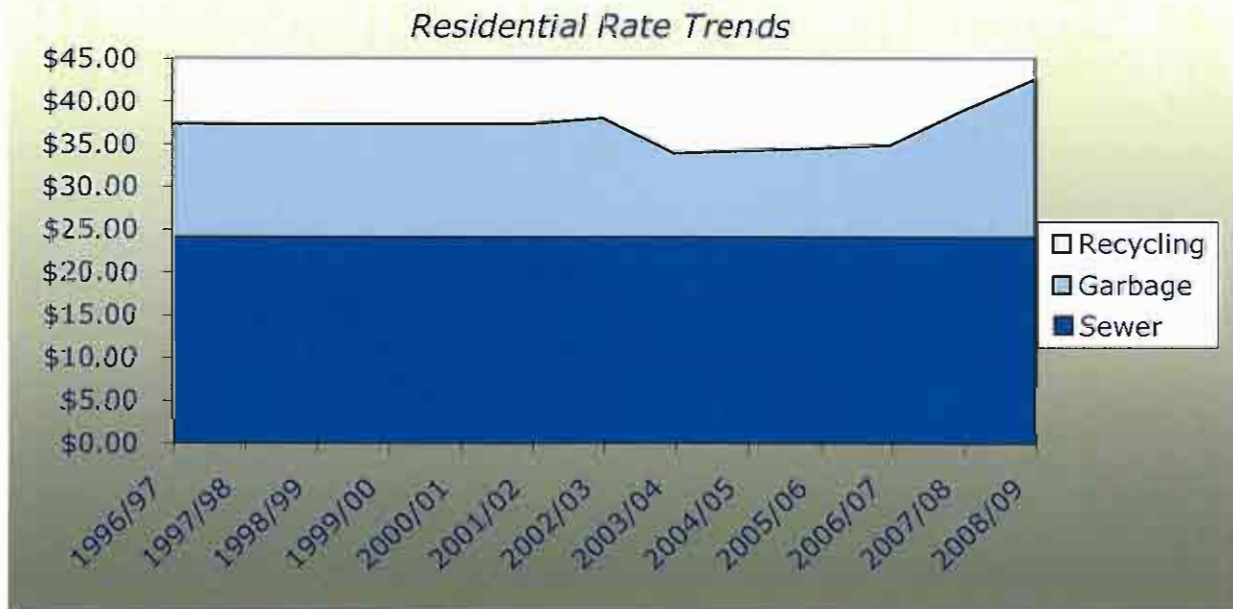
*Includes Homestead Exemption



**City of Fernandina Beach
Residential Rate Trends**

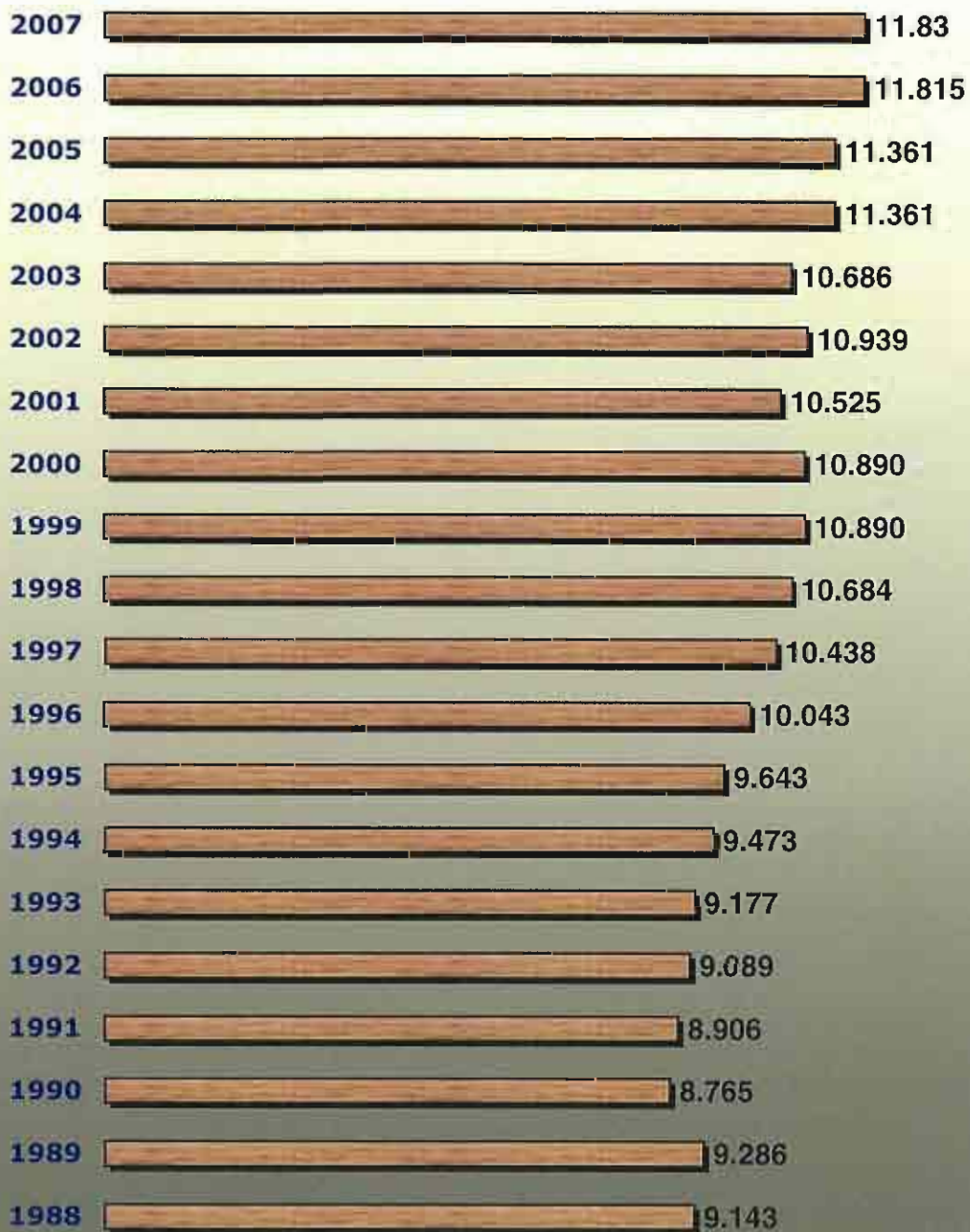
	Fiscal Year	Sewer	Garbage	Recycling	Total
	1996/97	\$24.00	\$13.40	\$0.00	\$37.40
	1997/98	\$24.00	\$13.40	\$0.00	\$37.40
	1998/99	\$24.00	\$13.40	\$0.00	\$37.40
	1999/00	\$24.00	\$13.40	\$0.00	\$37.40
	2000/01	\$24.00	\$13.40	\$0.00	\$37.40
	2001/02	\$24.00	\$13.40	\$0.00	\$37.40
	2002/03	\$24.00	\$14.06	\$0.00	\$38.06
	2003/04	\$24.00	\$9.94	\$0.00	\$33.94
	2004/05	\$24.00	\$10.24	\$0.00	\$34.24
	2005/06	\$24.00	\$10.55	\$0.00	\$34.55
	2006/07	\$24.00	\$10.87	\$0.00	\$34.87
	2007/08	\$24.00	\$14.95	\$0.00	\$38.95
**	2008/09	\$24.00	\$18.61	\$0.00	\$42.61

**Beginning in 08/09 sewer rates range from a \$24.00 minimum to a \$39.43 maximum

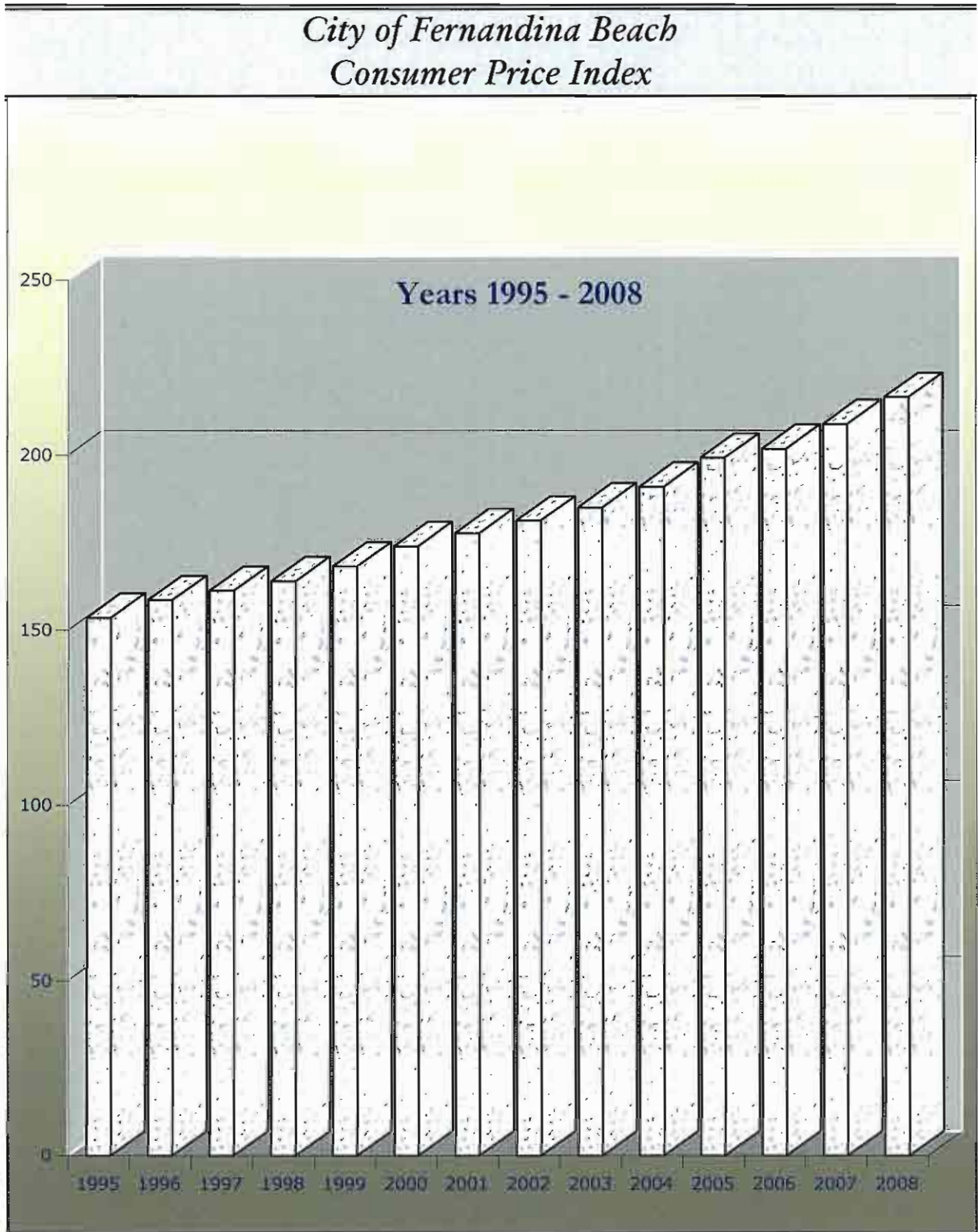


*City of Fernandina Beach
Comparison of Population for the Years 1988-2007*

In Thousands



* Source: Nassau County Fact Book



City of Fernandina Beach
Grants Awarded for the Period October 1, 2007 through September 30, 2008

Grantor	Department/Purpose	Amount	Percentage by Department/Purpose
FED/STATE	Airport	1,027,846	23.17%
STATE/COUNTY	Beach/Recreation	3,259,697	73.48%
FED/STATE	Marina	117,500	2.65%
STATE	Public Safety	31,229	0.70%
		4,436,272	100.00%

Grants Awarded FY 07-08

