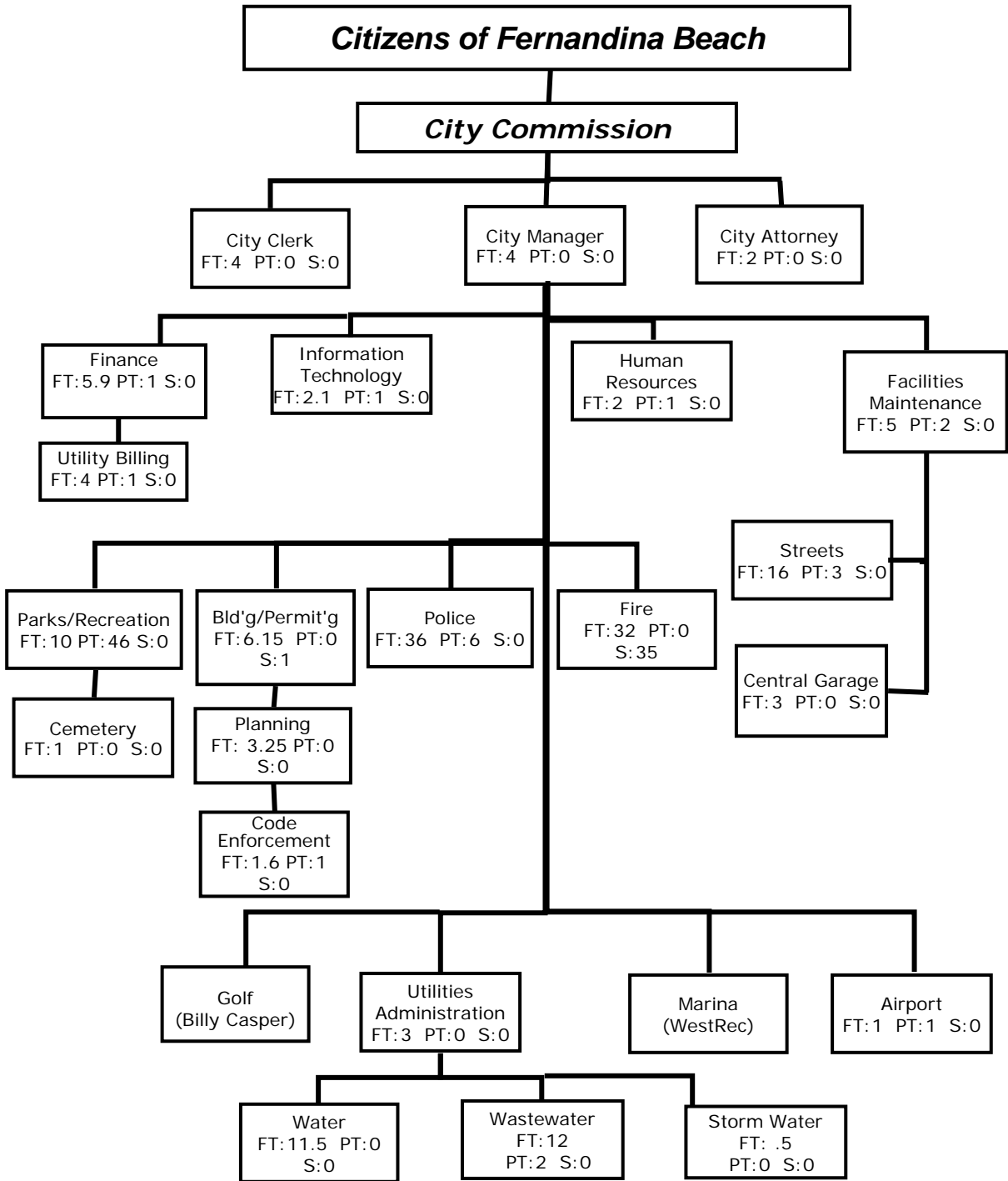


Statistical Analysis

Table of Contents-Statistical Analysis

Section	Description	Page #
Statistical Analysis	Statistical Analysis Table of Contents	Statistical II.1
	Citywide Organizational Chart	II.2
	Summary Statistics & Other Information	II.3
	Assessed Valuation	II.4
	Property Tax Information	II.5
	Property Tax Rate Comparison	II.6
	Property Tax Rate History	II.7
	Property Tax Rate Comparison	II.8
	Homeowner Tax Bill	II.9
	Sewer and Refuse Rate Trends	II.10
	Population Graph	II.11
	Consumer Price Index	II.12
	Grants Awarded 10/1/14 – 9/30/15	II.13

**City of Fernandina Beach
Organization Chart**



Full-Time: 166

Part-Time: 65

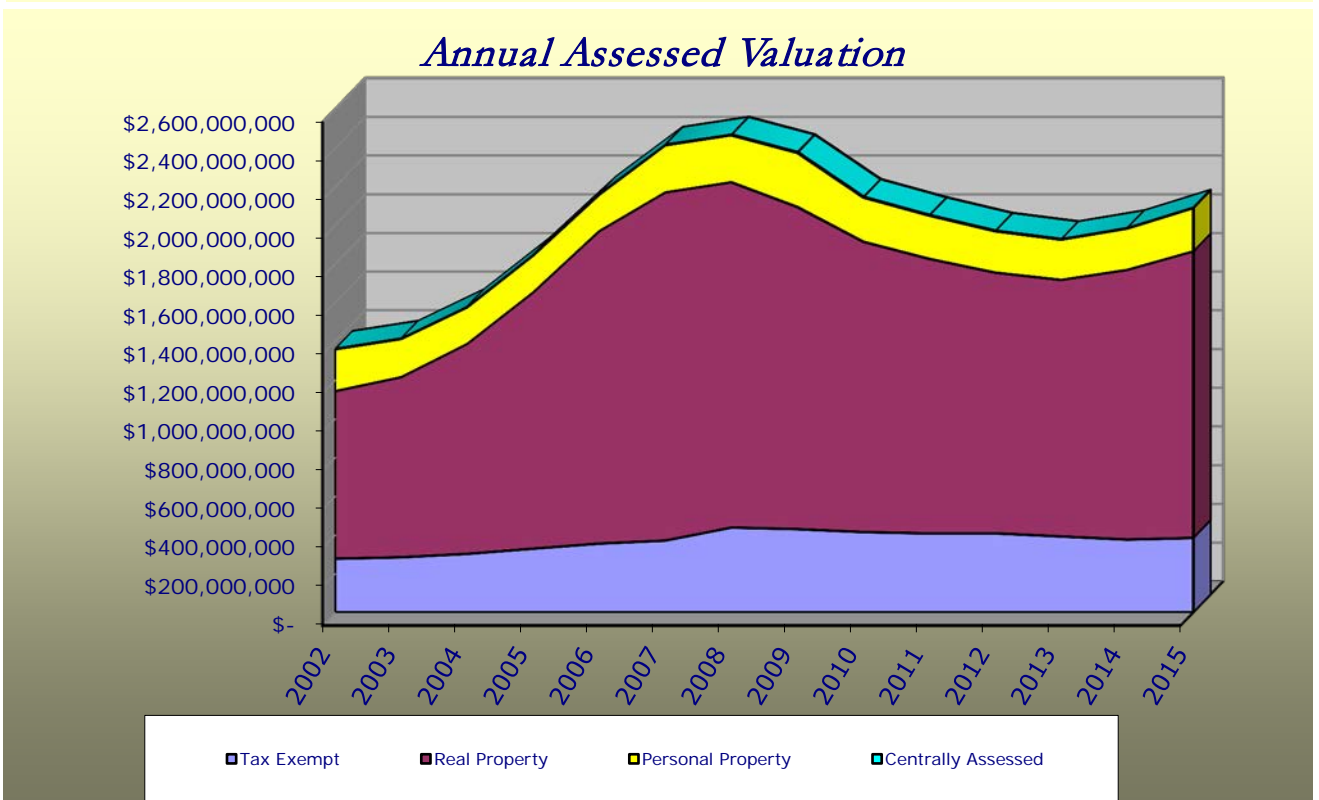
Seasonal: 36

<i>City of Fernandina Beach Summary Statistics & Other Information</i>	
Year of Incorporation	1825
Form of Government	Commission/Manager
City Population	11,830
Area of City in Square Miles	12.2*
Miles of Coastline	8.5
Number of City Employees	
Full-Time	166
Part-Time	65
Temporary/Seasonal	36
Government Facilities and Services	
Miles of Streets	76.05
Miles of Storm Sewers	7.1
Number of Street Lights	1,173
Culture and Recreation	
Community Centers	3
Parks	18
Parks Acreage	446
Golf Course	1
Marina	1
Tennis Courts	4
Fire Protection	
ISO Fire Classification	03/3X
Number of Stations	2
Number of Fire Personnel and Officers	32
Number of Calls for Service	2,200
Rescue Transports	1,300
Number of Inspections Conducted	200
Police Protection	
Number of Stations	1
Number of Police Personnel and Officers	36
Number of Citations	1,087
Number of Calls for Service	23,189
Sewer System	
Miles of Sanitary Sewers	97
Number of Active Sewer Accounts	6,709
Number of Treatment Plants	2
Annual Daily Average Treated in Millions of Gallons	1.741
Maximum Daily Capacity in Millions of Gallons	3.500
Water System	
Miles of Water Mains	120
Number of Active Water Accounts	8,064
Number of Treatment Plants	3
Annual Daily Pumpage in Millions of Gallons	5.071
Maximum Daily Capacity of Treatment in Millions of Gallons	18.2
Community Development Department	
Total Number of Inspections Completed	6,490
Total Number of Permits Issued	2,867
Cemeteries	1

* Change from prior years estimations. Current area based on more accurate mapping.

**City of Fernandina Beach
Assessed Valuation**

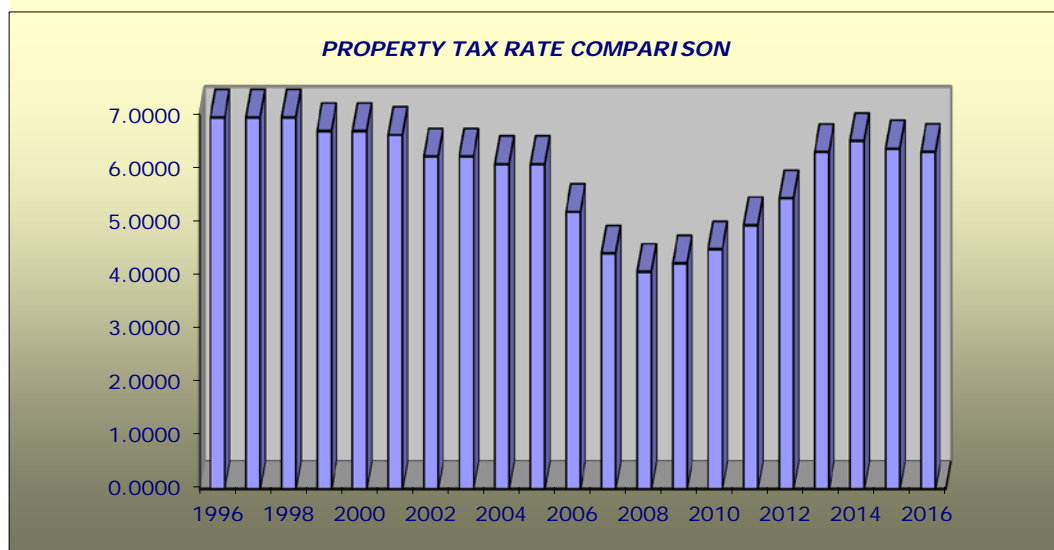
Year	Tax Exempt	Real Property	Personal Property	Centrally Assessed	Total Assessed Valuation
2002	276,789,322	865,575,555	216,187,292	1,190,196	1,359,742,365
2003	284,446,067	930,082,923	197,150,962	1,186,630	1,412,866,582
2004	301,966,794	1,084,261,098	188,866,346	2,081,443	1,577,175,681
2005	328,925,327	1,324,003,445	190,505,499	1,486,486	1,844,920,757
2006	355,164,445	1,614,338,881	188,252,367	3,022,391	2,160,778,084
2007	370,551,804	1,799,158,775	243,624,811	1,667,931	2,415,003,321
2008	437,824,431	1,784,626,178	243,055,518	1,545,241	2,467,051,368
2009	429,678,849	1,665,016,316	280,003,369	1,504,648	2,376,203,182
2010	414,536,344	1,500,216,560	229,069,622	1,206,063	2,145,028,589
2011	407,496,247	1,418,651,023	223,825,260	1,027,478	2,051,000,008
2012	407,949,279	1,347,251,896	213,854,206	1,118,539	1,970,173,920
2013	391,802,583	1,325,805,922	207,980,498	1,213,580	1,926,802,583
2014	375,797,061	1,393,492,482	213,464,867	1,497,770	1,984,252,180
2015	384,309,578	1,480,580,122	223,440,518	1,628,995	2,089,959,213



<i>City of Fernandina Beach Property Tax Information</i>					
Fiscal Year	Taxable Value	Millage Rate	Calculated Receipts	% Change Dollars	% Change Tax Rate
2000-2001	\$ 842,749,399	6.6210	\$ 5,300,852	12.60%	-1.12%
2001-2002	\$ 931,928,171	6.2185	\$ 5,505,435	3.86%	-6.08%
2002-2003	\$ 1,082,956,043	6.2185	\$ 6,397,644	16.21%	0.00%
2003-2004	\$ 1,128,420,515	6.0762	\$ 6,513,683	1.81%	-2.29%
2004-2005	\$ 1,275,208,887	6.0762	\$ 7,361,003	13.01%	0.00%
2005-2006	\$ 1,515,995,430	5.1825	\$ 7,463,814	1.40%	-14.71%
2006-2007	\$ 1,805,613,639	4.4106	\$ 7,565,648	1.36%	-14.89%
2007-2008	\$ 2,044,451,517	4.0678	\$ 7,978,900	5.46%	-7.77%
2008-2009	\$ 2,029,226,937	4.2209	\$ 8,213,322	2.94%	3.76%
2009-2010	\$ 1,946,524,333	4.4855	\$ 8,294,500	0.99%	6.27%
2010-2011	\$ 1,730,492,245	4.9365	\$ 8,115,446	-2.16%	10.05%
2011-2012	\$ 1,643,503,761	5.4335	\$ 8,538,000	5.21%	10.07%
2012-2013	\$ 1,562,224,641	6.3001	\$ 9,350,100	9.51%	15.95%
2013-2014	\$ 1,535,000,000	6.5080	\$ 9,490,300	1.50%	3.30%
2014-2015	\$ 1,608,455,119	6.3663	\$ 9,727,912	2.50%	-2.18%
2015-2016	\$ 1,705,649,635	6.3044	\$ 10,215,443	5.01%	-0.97%

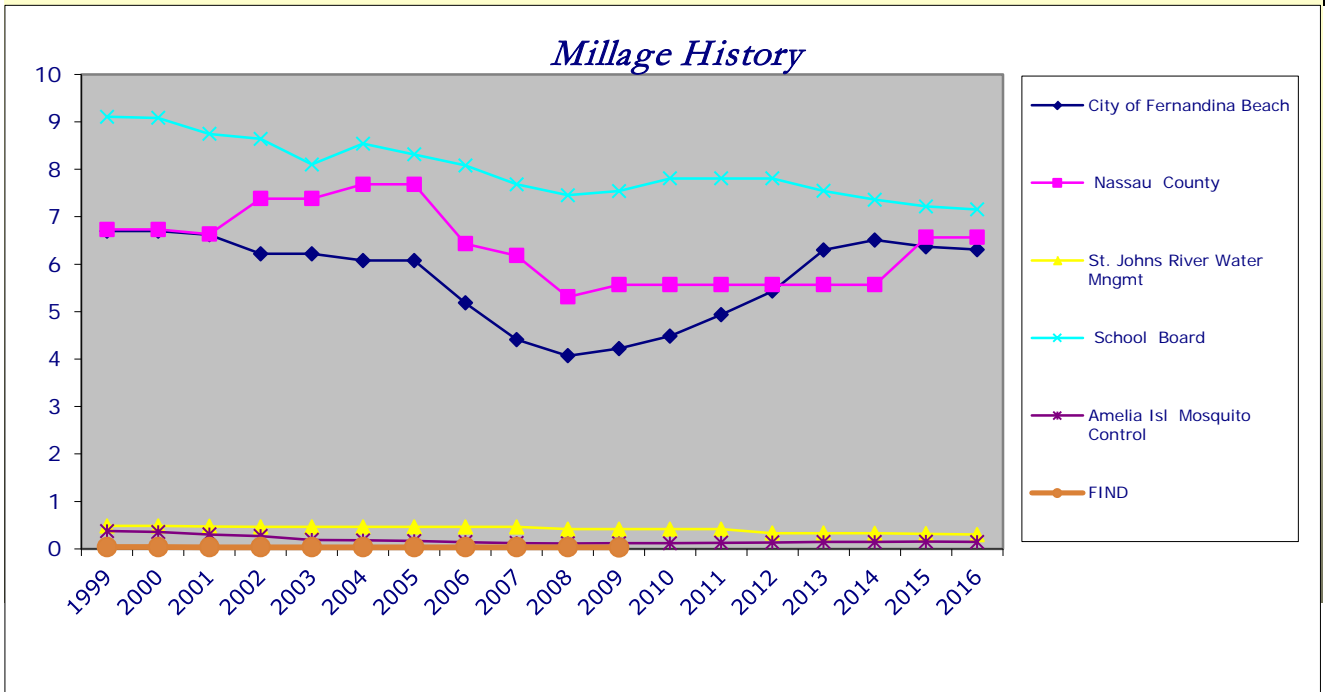
	BUDGET 2015	BUDGET 2016
Operating Millage	6.1021	6.1021
Voter Approved Debt	0.2642	0.2023
Total	6.3663	6.3044

City of Fernandina Beach Property Tax Rate Comparison		
Property Tax Rates		
Fiscal Year	Millage Rate	Percentage Increase (Decrease)
1996	6.9477	3.50%
1997	6.9477	0%
1998	6.9477	0%
1999	6.6962	-3.62%
2000	6.6962	0%
2001	6.6210	-1.12%
2002	6.2185	-6.08%
2003	6.2185	0.00%
2004	6.0762	-2.29%
2005	6.0762	0.00%
2006	5.1825	-14.71%
2007	4.4106	-14.89%
2008	4.0678	-7.77%
2009	4.2209	3.76%
2010	4.4855	6.27%
2011	4.9365	10.05%
2012	5.4335	10.07%
2013	6.3001	15.95%
2014	6.5080	3.30%
2015	6.3663	-2.18%
2016	6.3044	-0.97%



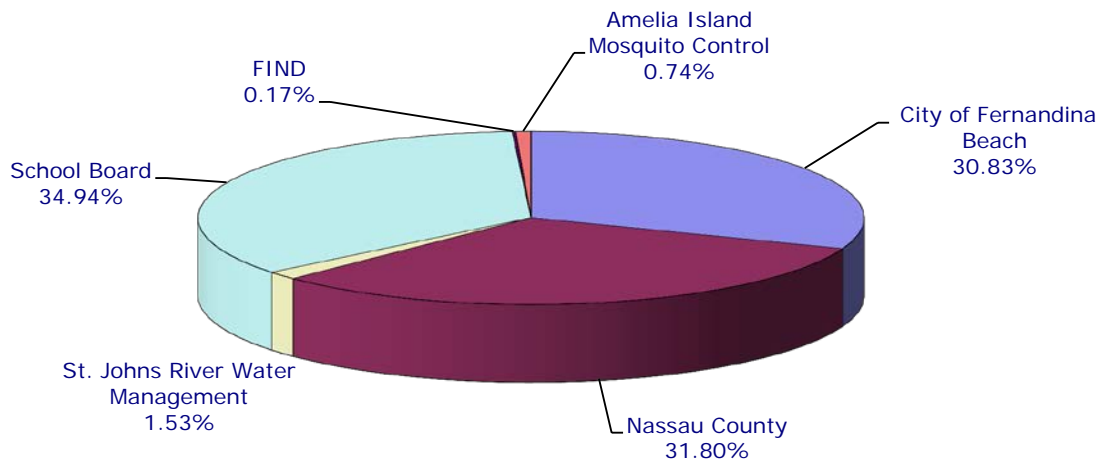
**City of Fernandina Beach
Property Tax Rate History
(Per \$1,000 of Assessed Taxable Value)**

Year	City of Fernandina Beach	Nassau County	St. Johns River Water Mngmt	School Board	FIND	Amelia Isl Mosquito Control	Total
1999	6.6962	6.7321	0.4820	9.1070		0.3750	23.3923
2000	6.6962	6.7321	0.4820	9.0810		0.3546	23.3459
2001	6.6210	6.6321	0.4720	8.7460		0.3047	22.7758
2002	6.2185	7.3821	0.4620	8.6390		0.2709	22.9725
2003	6.2185	7.3821	0.4620	8.1010		0.1900	22.3536
2004	6.0762	7.6821	0.4620	8.5380		0.1792	22.9375
2005	6.0762	7.6821	0.4620	8.3130		0.1660	22.6993
2006	5.1825	6.4321	0.4620	8.081	0.0385	0.1441	20.3402
2007	4.4106	6.1821	0.4620	7.681	0.0385	0.1225	18.8967
2008	4.0678	5.3115	0.4158	7.454	0.0345	0.1149	17.3985
2009	4.2209	5.5670	0.4158	7.542	0.0345	0.1190	17.8992
2010	4.4855	5.5670	0.4158	7.808	0.0345	0.1175	18.4283
2011	4.9365	5.5670	0.4158	7.808	0.0345	0.1294	18.8912
2012	5.4335	5.5670	0.3313	7.808	0.0345	0.1372	19.3115
2013	6.3001	5.5670	0.3313	7.543	0.0345	0.1453	19.9212
2014	6.5080	5.5670	0.3283	7.359	0.0345	0.1474	19.9442
2015	6.3663	6.5670	0.3164	7.216	0.0345	0.1522	20.6524
2016	6.3044	6.5670	0.3023	7.153	0.0320	0.1472	20.5059

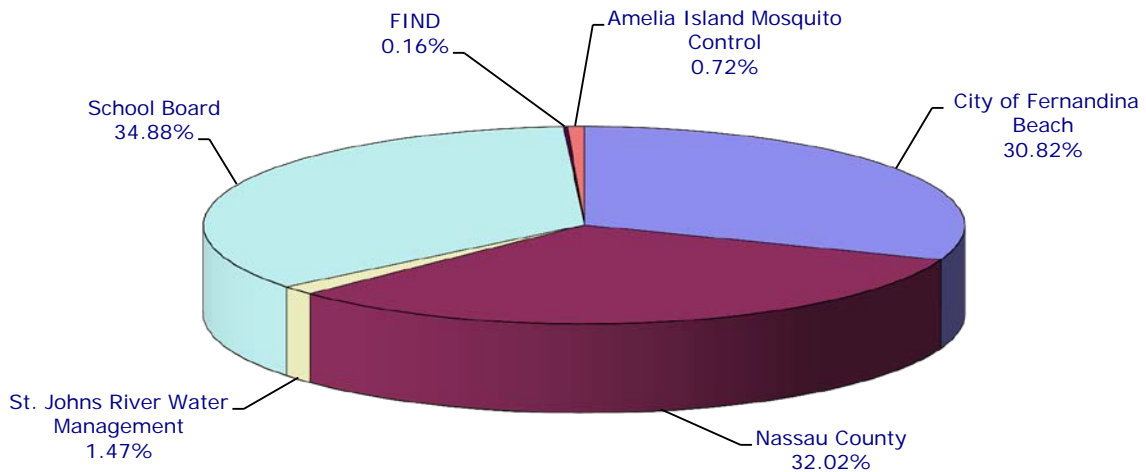


**City of Fernandina Beach
Property Tax Rate Comparison
Fiscal Years 2015 & 2016**

**Total Property Taxes
Fiscal Year 2015**



**Total Property Taxes
Fiscal Year 2016**

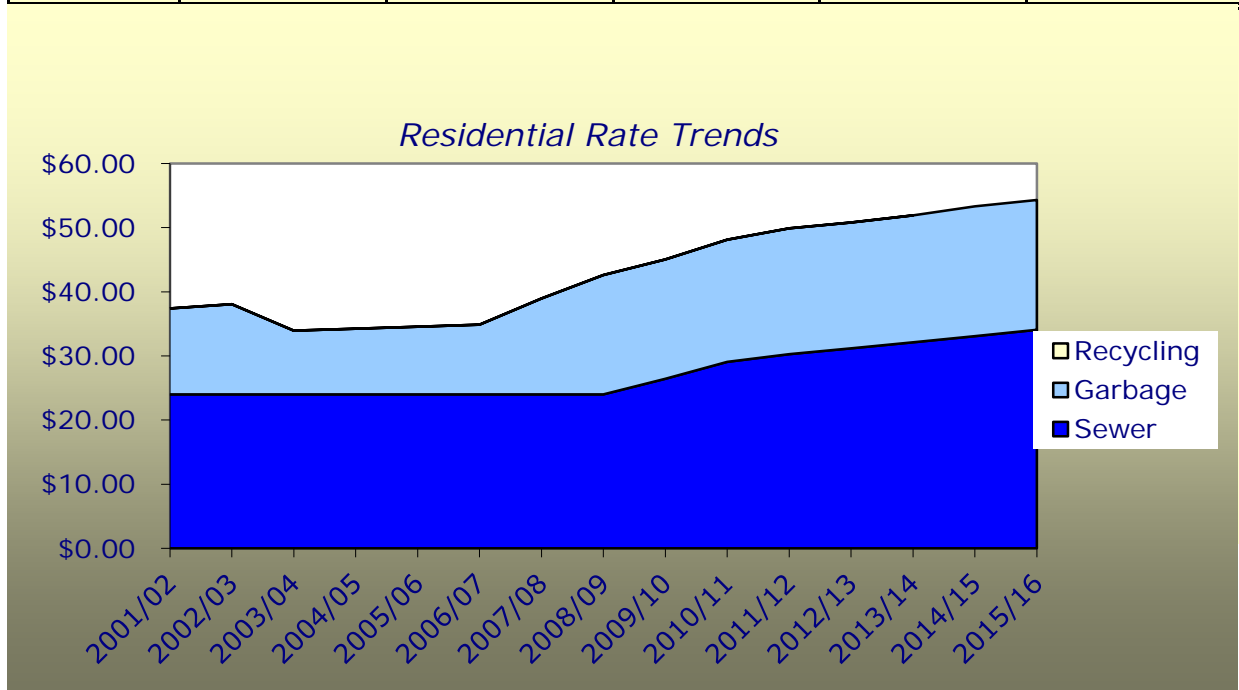


City of Fernandina Beach Homeowner Tax Bill* Based on 2015 (FY 2015-16) Tax Rate					
VALUE OF HOME		2016 TAX	2015 TAX	\$\$ Change	% Change
\$50,000	Operating	\$ 152.55	\$ 152.55	\$ -	0.00%
	Debt	\$ 5.06	\$ 6.61	\$ (1.55)	-23.45%
	Total	\$ 157.61	\$ 159.16	\$ (1.55)	-0.97%
\$100,000	Operating	\$ 457.66	\$ 457.66	\$ -	0.00%
	Debt	\$ 15.17	\$ 19.82	\$ (4.65)	-23.46%
	Total	\$ 472.83	\$ 477.48	\$ (4.65)	-0.97%
\$150,000	Operating	\$ 762.76	\$ 762.76	\$ -	0.00%
	Debt	\$ 25.29	\$ 33.03	\$ (7.74)	-23.43%
	Total	\$ 788.05	\$ 795.79	\$ (7.74)	-0.97%

*Includes Homestead Exemption

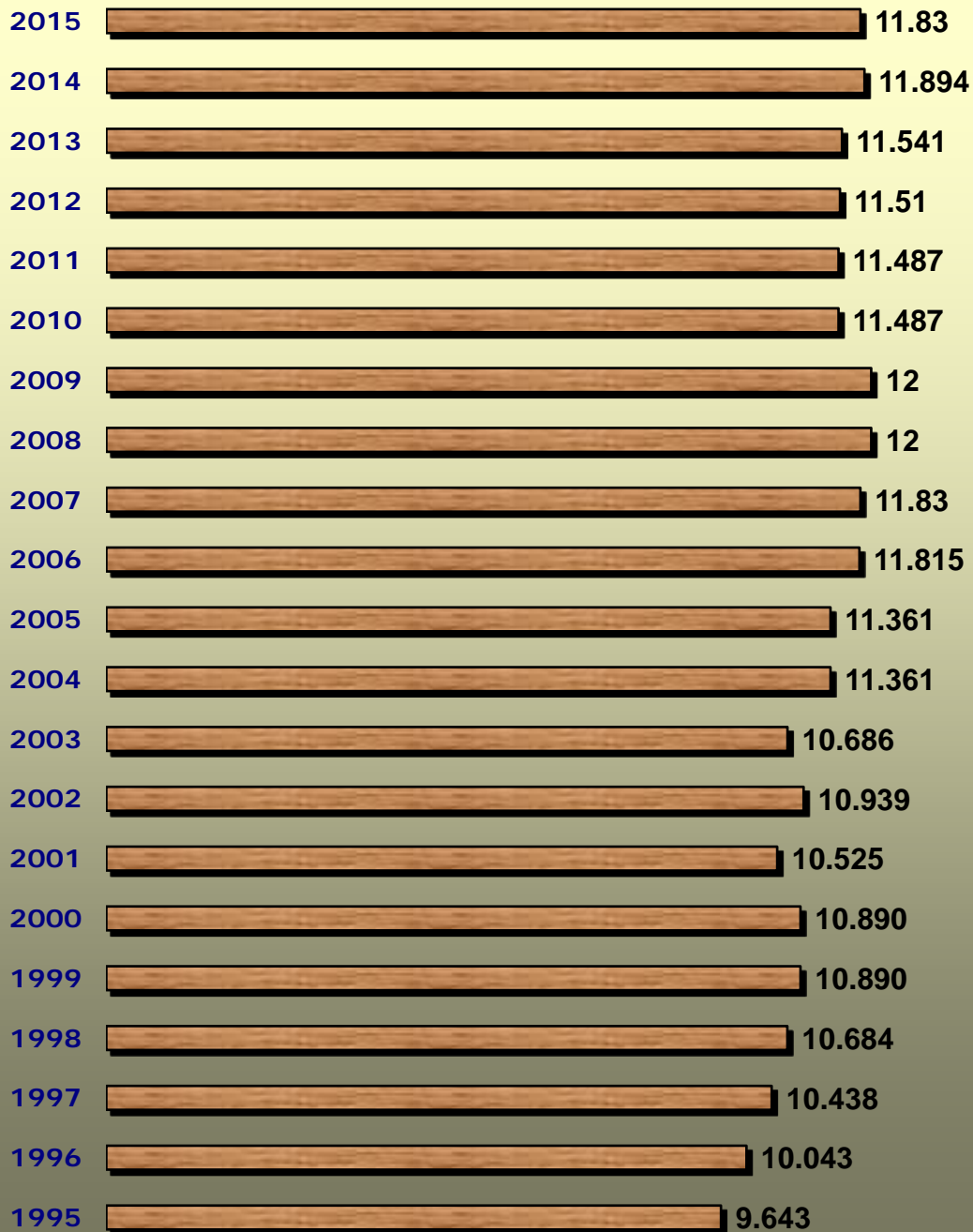


City of Fernandina Beach Residential Rate Trends					
	Fiscal Year	Sewer	Garbage	Recycling	Total
	2001/02	\$24.00	\$13.40	\$0.00	\$37.40
	2002/03	\$24.00	\$14.06	\$0.00	\$38.06
	2003/04	\$24.00	\$9.94	\$0.00	\$33.94
	2004/05	\$24.00	\$10.24	\$0.00	\$34.24
	2005/06	\$24.00	\$10.55	\$0.00	\$34.55
	2006/07	\$24.00	\$10.87	\$0.00	\$34.87
	2007/08	\$24.00	\$14.95	\$0.00	\$38.95
	2008/09	\$24.00	\$18.61	\$0.00	\$42.61
	2009/10	\$26.43	\$18.61	\$0.00	\$45.04
	2010/11	\$29.07	\$19.05	\$0.00	\$48.12
	2011/12	\$30.27	\$19.62	\$0.00	\$49.89
	2012/13	\$31.18	\$19.62	\$0.00	\$50.80
	2013/14	\$32.12	\$19.79	\$0.00	\$51.91
	2014/15	\$33.08	\$20.24	\$0.00	\$53.32
	2015/16	\$34.07	\$20.24	\$0.00	\$54.31

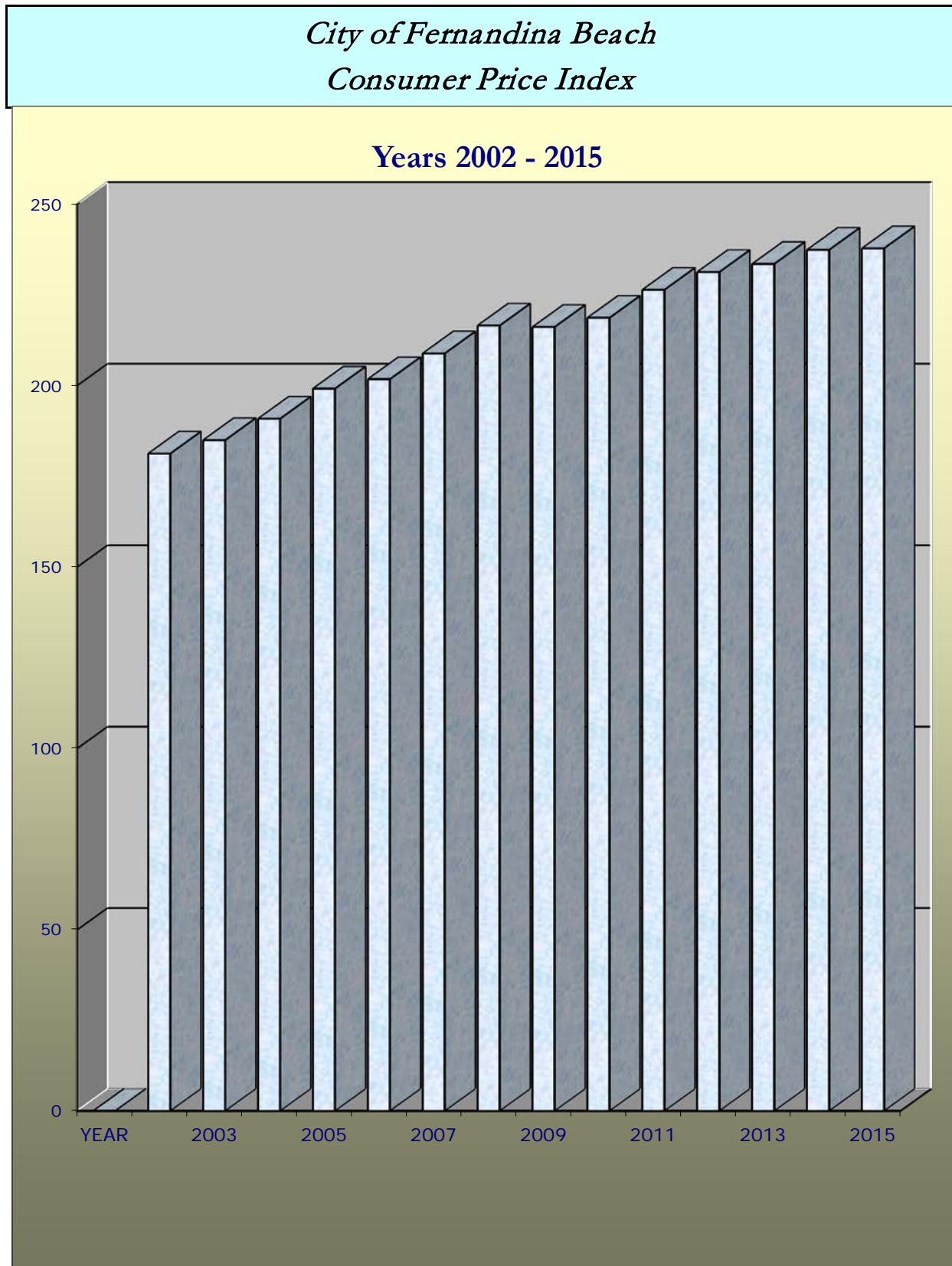


**City of Fernandina Beach
Comparison of Population for the Years 1995-2015**

In Thousands



* Source: Florida Department of Revenue



City of Fernandina Beach Grants Awarded for the Period October 1, 2014 through September 30, 2015			
Grantor	Department/Purpose	Amount	Percentage by Department/Purpose
STATE	Public Safety	2,210	0.39%
FEDERAL & STATE	Parks & Recreation	247,653	43.26%
STATE	Marina	172,499	30.14%
FEDERAL & STATE	Airport	150,000	26.21%
		572,362	100.00%

